

Ashley Norton

PULL HANDLES



1360 Pull
21 1/4" x 1 5/8"
Projection: 4 3/8"
CTC: 20"
Shown in light bronze patina
For back to back pair,
order 1360-BTB



1370 Pull
22" x 1 1/4"
Projection: 4"
CTC: 18"
Shown in dark bronze patina
For back to back pair,
order 1370-BTB



1380 Pull
21 3/4" x 1 1/4"
Projection: 4"
CTC: 18"
Shown in dark bronze patina
For back to back pair,
order 1380-BTB

Maximum door thickness for Back-to-Back fixing: 2 1/2"

PULL HANDLES



1340 Tuscany Pull

THRU BOLT	BACK TO BACK PAIR	SURFACE MOUNT	CTC	OVERALL LENGTH	MAX. DIA.	PROJECTION
1340.9	1340.9-BTB	1340.9-SM	8"	8 3/4"	3/4"	2 1/8"
1340.12	1340.12-BTB	1340.12-SM	11"	12"	1"	2 1/4"
1340.18	1340.18-BTB	1340.18-SM	17"	18"	1"	2 1/4"
1340.24	1340.24-BTB	1340.24-SM	22 3/4"	24"	1 1/4"	2 1/2"



1450 Apollo Pull

THRU BOLT	BACK TO BACK PAIR	SURFACE MOUNT	CTC	OVERALL LENGTH	HANDLE SIZE	PROJECTION
1450.9	1450.9-BTB	1450.9-SM	8"	8 3/4"	5/8" x 1"	2 3/8"
1450.12	1450.12-BTB	1450.12-SM	11"	12"	5/8" x 1"	2 3/8"
1450.18	1450.18-BTB	1450.18-SM	17"	18"	5/8" x 1"	2 3/8"
1450.24	1450.24-BTB	1450.24-SM	22 3/4"	24"	5/8" x 1"	2 3/8"



1334 Deco Pull

THRU BOLT	BACK TO BACK PAIR	SURFACE MOUNT	CTC	OVERALL LENGTH	HANDLE SIZE	PROJECTION
1334.12	1334.12-BTB	1334.12-SM	12"	13"	1" x 5/8"	2"
1334.18	1334.18-BTB	1334.18-SM	18"	19"	1" x 5/8"	2"
1334.24	1334.24-BTB	1334.24-SM	24"	25 1/4"	1" x 5/8"	2"



1376 Traditional Pull

Back to back and surface mount fixing not available

THRU BOLT	CTC	OVERALL LENGTH	WIDTH	PROJECTION
1376.9	8"	9 1/4"	3/4"	2 1/4"
1376.12	11"	12 1/2"	1"	2 1/2"
1376.18	17"	19"	1"	2 1/2"
1376.24	22 3/4"	24 1/2"	1 1/4"	2 1/2"

Surface mounted option suitable for solid wood doors only
Maximum door thickness for Back-to-Back fixing: 2 1/2"

PULL HANDLES



1330 'D' Pull

THRU BOLT	BACK TO BACK PAIR	SURFACE MOUNT	CTC	OVERALL LENGTH	MAX. DIA.	PROJECTION
1330.9	1330.9-BTB	1330.9-SM	8"	8 3/4"	3/4"	2"
1330.12	1330.12-BTB	1330.12-SM	11"	12"	1"	2 1/4"
1330.18	1330.18-BTB	1330.18-SM	17"	18"	1"	2 3/8"
1330.24	1330.24-BTB	1330.24-SM	22 3/4"	24"	1 1/4"	2 1/2"



1310 Hex Pull

THRU BOLT	BACK TO BACK PAIR	SURFACE MOUNT	CTC	OVERALL LENGTH	MAX. DIA.	PROJECTION
1310.9	1310.9-BTB	1310.9-SM	5 1/2"	8 1/2"	3/4"	2 1/4"
1310.12	1310.12-BTB	1310.12-SM	7 1/4"	12"	1"	2 1/4"
1310.18	1310.18-BTB	1310.18-SM	11 1/2"	18"	1"	2 3/8"
1310.24	1310.24-BTB	1310.24-SM	15 3/4"	24"	1 1/4"	2 1/2"



1300 Rope Pull

THRU BOLT	BACK TO BACK PAIR	SURFACE MOUNT	CTC	OVERALL LENGTH	MAX. DIA.	PROJECTION
1300.9	1300.9-BTB	1300.9-SM	5 1/2"	8 1/2"	3/4"	2 1/4"
1300.12	1300.12-BTB	1300.12-SM	7 1/4"	12"	1"	2 1/4"
1300.18	1300.18-BTB	1300.18-SM	11 1/2"	18"	1"	2 3/8"
1300.24	1300.24-BTB	1300.24-SM	15 3/4"	24"	1 1/4"	2 1/2"



1350 Tapered Pull

THRU BOLT	BACK TO BACK PAIR	SURFACE MOUNT	CTC	OVERALL LENGTH	MAX. DIA.	PROJECTION
1350.9	1350.9-BTB	1350.9-SM	5 1/2"	8 1/2"	3/4"	2"
1350.12	1350.12-BTB	1350.12-SM	7 1/4"	12"	1"	2 1/4"
1350.18	1350.18-BTB	1350.18-SM	11 1/2"	18"	1"	2 3/8"
1350.24	1350.24-BTB	1350.24-SM	15 3/4"	24"	1 1/4"	2 1/2"

Surface mounted option suitable for solid wood doors only
Maximum door thickness for Back-to-Back fixing: 2 1/2"

PULL HANDLES



1312 Bauhaus Pull

THRU BOLT	BACK TO BACK PAIR	SURFACE MOUNT	CTC	OVERALL LENGTH	HANDLE DIA.	PROJECTION
1312.12	1312.12-BTB	1312.12-SM	12"	13"	1"	2 3/8"
1312.18	1312.18-BTB	1312.18-SM	18"	19"	1"	2 3/8"
1312.24	1312.24-BTB	1312.24-SM	24"	25"	1"	2 3/8"



1430 Bar Pull

THRU BOLT	BACK TO BACK PAIR	SURFACE MOUNT	CTC	OVERALL LENGTH	HANDLE DIA.	PROJECTION
1430.12	1430.12-BTB	1430.12-SM	8"	12 3/4"	1"	2 3/4"
1430.18	1430.18-BTB	1430.18-SM	12"	18 1/2"	1"	2 3/4"
1430.24	1430.24-BTB	1430.24-SM	16"	24 1/2"	1"	2 3/4"



1383 Offset Urban Pull

THRU BOLT	BACK TO BACK	SURFACE MOUNT	CTC	OVERALL LENGTH	HANDLE SIZE	OFFSET	PROJECTION
1383.12	1383.12-BTB	1383.12-SM	12"	13"	1" x 5/8"	3"	2"
1383.18	1383.18-BTB	1383.18-SM	18"	19"	1" x 5/8"	3"	2"
1383.24	1383.24-BTB	1383.24-SM	24"	25"	1" x 5/8"	3"	2"



1721 Durham Pull

THRU BOLT	BACK TO BACK PAIR	SURFACE MOUNT	CTC	OVERALL LENGTH	HANDLE SIZE	PROJECTION
1721.12	1721.12-BTB	1721.12-SM	12"	13 1/2"	1" x 3/4"	2 1/8"
1721.18	1721.18-BTB	1721.18-SM	18"	19 1/2"	1" x 3/4"	2 1/8"
1721.24	1721.24-BTB	1721.24-SM	24"	25 1/2"	1" x 3/4"	2 1/8"

Surface mounted option suitable for solid wood doors only
 Maximum door thickness for Back-to-Back fixing: 2 1/2"

PULL HANDLES



1390 Urban Pull

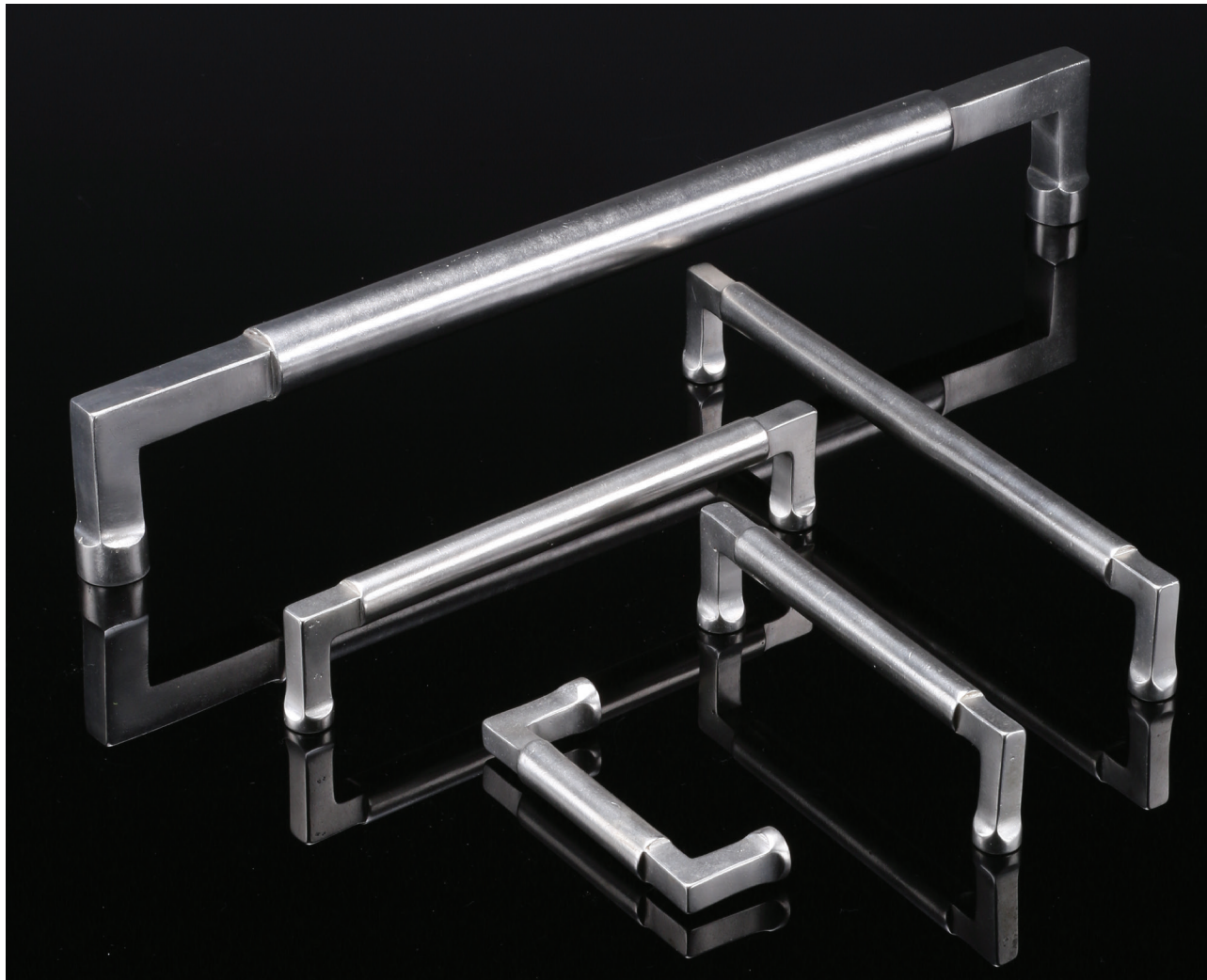
THRU BOLT	BACK TO BACK PAIR	SURFACE MOUNT	CTC	OVERALL LENGTH	HANDLE SIZE	PROJECTION
1390.9	1390.9-BTB	1390.9-SM	8"	8 ¾"	1" x ¾"	2"
1390.12	1390.12-BTB	1390.12-SM	11"	12"	1" x ¾"	2"
1390.18	1390.18-BTB	1390.18-SM	17"	18"	1" x ¾"	2"
1390.24	1390.24-BTB	1390.24-SM	22 ¾"	24"	1" x ¾"	2"



1348 Claros Pull

THRU BOLT	BACK TO BACK PAIR	SURFACE MOUNT	CTC	OVERALL LENGTH	HANDLE SIZE	PROJECTION
1348.12	1348.12-BTB	1348.12-SM	12"	13"	1" x ¾"	2 ½"
1348.18	1348.18-BTB	1348.18-SM	18"	19"	1" x ¾"	2 ½"
1348.24	1348.24-BTB	1348.24-SM	24"	25 ¼"	1" x 1 ¼"	2 7/8"

Surface mounted option suitable for solid wood doors only
 Maximum door thickness for Back-to-Back fixing: 2 ½"



PULL HANDLES



1150 Offset Pull
 12 $\frac{3}{8}$ " x 2"
 Projection: 2 $\frac{1}{2}$ "
 Shown in
 white bronze patina



1155 Pull Handle
 15" x 2 $\frac{3}{8}$ "
 Projection: 2 $\frac{3}{8}$ "
 Shown in
 dark bronze patina



SQ.G.18 Pull Handle
 18 $\frac{1}{8}$ " x 3"
 Shown in light bronze patina



SP.G.18 Pull Handle
 18 $\frac{1}{8}$ " x 3"
 Shown in light bronze patina



AG.G.18 Pull Handle
 18 $\frac{1}{8}$ " x 3"
 Shown in dark bronze patina



CV.G.18 Pull Handle
 18 $\frac{1}{8}$ " x 3"
 Shown in dark bronze patina



MD.G.18 Pull Handle
 18 $\frac{1}{8}$ " x 3"
 Shown in light bronze patina

PUSH PLATES



Rectangular Push Plate
SQ.E.13: 13" x 3"
SQ.E.18: 18 1/8" x 3"
Shown in light bronze patina



Arched Push Plate
SP.E.13: 13" x 3"
SP.E.18: 18 1/8" x 3"
Shown in dark bronze patina



Angular Push Plate
AG.E.11: 11" x 2 1/2"
AG.E.18: 18 1/8" x 3"
Shown in dark bronze patina



Curved Push Plate
CV.E.13: 13" x 3"
CV.E.18: 18 1/8" x 3"
Shown in white bronze patina



Urban Push Plate
MD.E.13: 13" x 3"
MD.E.18: 18 1/8" x 3"
Shown in light bronze patina