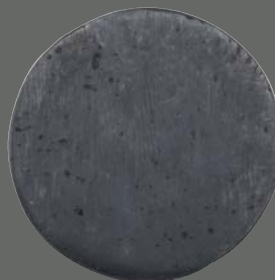


PULL HANDLES 91

Pull Handles / 93

Push Plates / 98

AVAILABLE PATINAS



DARK BRONZE



LIGHT BRONZE

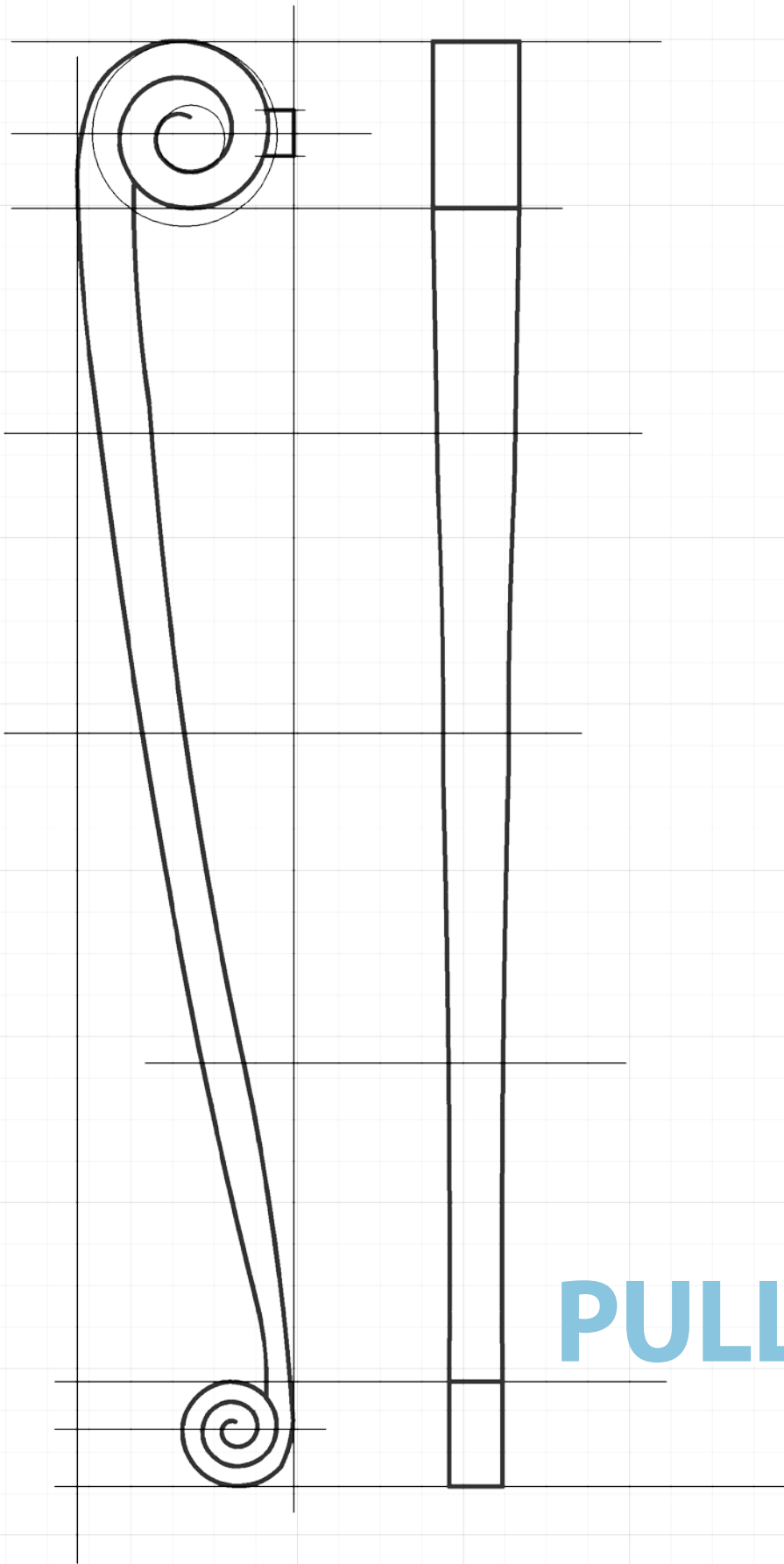


MATT BLACK



WHITE BRONZE





PULL HANDLES

PULL HANDLES



1360 Pull
21 1/4" x 1 5/8"
Projection: 4 3/8"
CTC: 20"
Shown in light bronze patina

For back to back pair, order 1360-BTB



1370 Pull
22" x 1 1/4"
Projection: 4"
CTC: 18"
Shown in dark bronze patina

For back to back pair, order 1370-BTB



1380 Pull
21 3/4" x 1 1/4"
Projection: 4"
CTC: 18"
Shown in dark bronze patina

For back to back pair, order 1380-BTB

PULL HANDLES

Available in 9", 12", 18" and 24" lengths



1340 Tuscany Pull
Shown in dark bronze patina
Back to back fixing available



1450 Apollo Pull
Shown in light bronze patina
Back to back fixing available



1390 Urban Pull
Shown in dark bronze patina
Back to back fixing available

1340 Tuscany Pull				1450 Apollo Pull				1450 Urban Pull			
Item	Length	CTC	Max Dia.	Item	Length	CTC	Handle Size	Item	Length	CTC	Handle Size
1340.9	8 3/4"	8"	3/4"	1450.9	8 3/4"	8"	5/8" x 1"	1390.9	8 3/4"	8"	1" x 3/4"
1340.12	12"	11"	1"	1450.12	12"	11"	5/8" x 1"	1390.12	12"	11"	1" x 3/4"
1340.18	18"	17"	1"	1450.18	18"	17"	5/8" x 1"	1390.18	18"	17"	1" x 3/4"
1340.24	24"	22 3/4"	1 1/4"	1450.24	24"	22 3/4"	5/8" x 1"	1390.24	24"	22 3/4"	1" x 3/4"

PULL HANDLES

Available in 9", 12", 18" and 24" lengths



1320 Aztec Pull
Shown in dark bronze patina
Back to back fixing not available



1330 'D' Pull
Shown in white bronze patina
Back to back fixing available



1376 Traditional Pull
Shown in light bronze patina
Back to back fixing not available

1320 Aztec Pull				1330 'D' Pull				1376 Traditional Pull			
Item	Length	CTC	Width	Item	Length	CTC	Dia.	Item	Length	CTC	Dia.
1320.9	9 1/2"	8"	5/8"	1330.9	8 3/4"	8"	3/4"	1376.9	9 1/4"	8"	3/4"
1320.12	12"	10 1/2"	1"	1330.12	12"	11"	1"	1376.12	12 1/2"	11"	1"
1320.18	18"	16 1/2"	1"	1330.18	18"	17"	1"	1376.18	19"	17"	1"
1320.24	24"	22 1/2"	1 1/4"	1330.24	24"	22 3/4"	1 1/4"	1376.24	24 1/2"	22 3/4"	1 1/4"

PULL HANDLES

Available in 9", 12", 18" and 24" lengths



1310 Hex Pull
Shown in white bronze patina
Back to back fixing available



1300 Rope Pull
Shown in dark bronze patina
Back to back fixing available



1350 Tapered Pull
Shown in light bronze patina
Back to back fixing available

1310 Hex Pull				1300 Rope Pull				1350 Tapered Pull			
Item	Length	CTC	Dia.	Item	Length	CTC	Dia.	Item	Length	CTC	Max Dia.
1310.9	8 1/2"	5 1/2"	3/4"	1300.9	8 1/2"	5 1/2"	3/4"	1350.9	8 1/2"	5 1/2"	3/4"
1310.12	12"	7 1/4"	1"	1300.12	12"	7 1/4"	1"	1350.12	12"	7 1/4"	1"
1310.18	18"	11 1/2"	1"	1300.18	18"	11 1/2"	1"	1350.18	18"	11 1/2"	1"
1310.24	24"	15 3/4"	1 1/4"	1300.24	24"	15 3/4"	1 1/4"	1350.24	24"	15 3/4"	1 1/4"

PULL HANDLES



1150 Offset Pull
12 3/8" x 2"
Shown in white bronze patina



1155 Pull Handle
15" x 2 3/8"
Shown in dark bronze patina



SQ.G.18 Pull Handle
18 1/8" x 3"
Shown in light bronze patina



SP.G.18 Pull Handle
18 1/8" x 3"
Shown in light bronze patina



CV.G.18 Pull Handle
18 1/8" x 3"
Shown in dark bronze patina



MD.G.18 Pull Handle
18 1/8" x 3"
Shown in light bronze patina

PUSH PLATES



Rectangular Push Plate
SQ.E.13: 13" x 3"
SQ.E.18: 18 1/8" x 3"
Shown in light bronze patina



Arched Push Plate
SP.E.13: 13" x 3"
SP.E.18: 18 1/8" x 3"
Shown in dark bronze patina



Curved Push Plate
CV.E.13: 13" x 3"
CV.E.18: 18 1/8" x 3"
Shown in white bronze patina



Urban Push Plate
MD.E.13: 13" x 3"
MD.E.18: 18 1/8" x 3"
Shown in light bronze patina