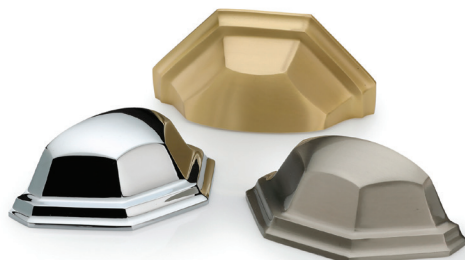


WHAT'S HOT Everywhere Else

1



2



3



4

5

6

1

Designed by Philippe Starck for **DURAVIT**, the Soleil by Starck collection of bath sinks, tubs and toilets draws on the sea for inspiration in their soft, refined lines, organic forms and relaxed aesthetic. duravit.us.com

2

ASHLEY NORTON updates the look of classic cup pulls with angles and hammer-mark detailing on its Cup Pull Collection. Finishes range from lead-free pewter and bronzes to shades of black. ashleynorton.com

3

The Cast-Iron Laundry Sink from **NANTUCKET SINKS** offers a finished bottom or a raw bottom. The 22-in. wall-mounted basin has a durable white-enamel interior, a three-in. drain hole and two pre-drilled faucet holes. nantucketsinks.com

4

The Series 200 and 400 warming drawers from **GAGGENAU** can be placed independently or as part of an appliance grouping. With hidden touch controls for slow cooking, food warming and heating of cups and plates, the temperature settings can be adjusted in 10-degree increments. gaggenau.com

5

SHOWPLACE CABINETRY expands its Standard Paint Collection with four fresh colors. Evergreen Fog, Iron Ore, Accessible Beige and Mediterranean (shown) are cutting-edge hues that are now available without an upcharge. showplacecabinetry.com

6

From **DMF LIGHTING**, the H Series of downlights is a modular, field-tunable system that accommodates ceiling heights up to 12 feet with three low-glare brightness settings. The wet-rated, Energy Star-compliant LED fixture features a recyclable housing. dmflighting.com