

POCKET DOOR HARDWARE



Sliding/Pocket Door Hardware

Shown in Satin Nickel (4) finish

Plate Dimensions: 7 3/4" x 2 1/4"

Plate Depth: 7/16"

Supplied with mortise lock

Minimum door thickness 1 3/4"

Maximum door thickness 2 1/4"

DOOR STOPS



C131 Baseboard Door Stop
3" Length



V1081 Wall Mounted Door Stop
3" Length



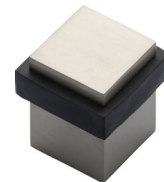
V1084 Square Wall Mounted Door Stop
3" Length



C134 Goose Neck Door Stop
Footprint: 2 1/4" x 1 3/8"
Height: 2" to center of rubber,
2 1/2" total



V1088 Round Floor Mounted Door Stop
Base Dia.: 1 1/2"
Height: 1 1/8"



V1089 Floor Mounted Door Stop
Footprint: 1 1/8" x 1 1/8"
Height: 1 3/8"

EDGE PULLS AND FLUSH PULLS



C1165 Edge pull
3 7/8" X 3/4"



C1820 4" Flush pull
4" x 2"



C1820 6" Flush pull
6" x 2"



C1850 4" Flush pull
4 1/8" x 1 3/4"



C1860 Square Flush Pull
2 1/2" x 2 1/2"