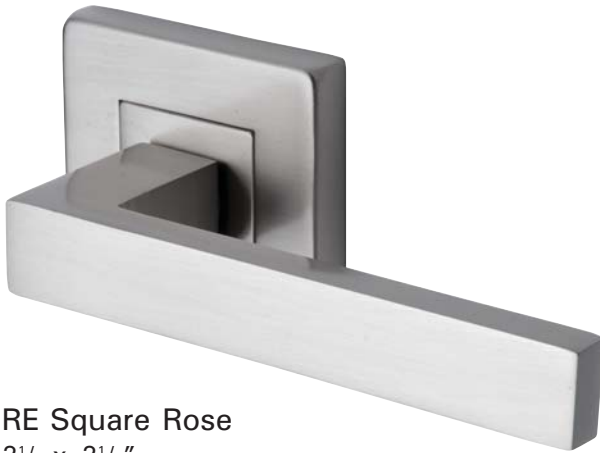




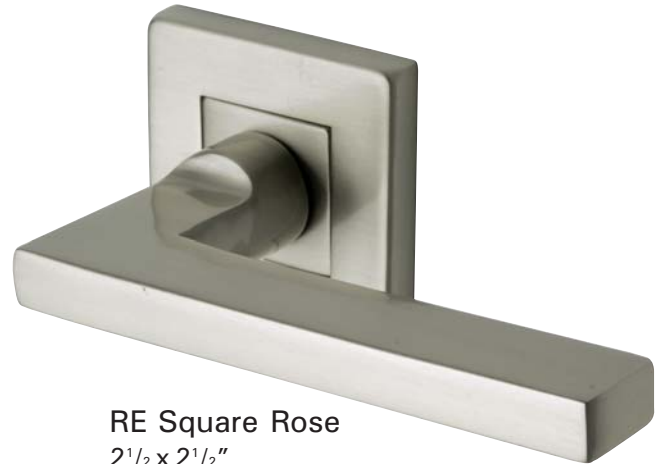
## Contemporary Suite

*Ashley Norton*

The 2<sup>3</sup>/<sub>8</sub> diameter AN round rose and 2<sup>1</sup>/<sub>2</sub>" RE square rose are ideal for interior application, available with any lever in your choice of finish. Featuring concealed screws on both sides of door, these roses complement our contemporary levers.



**RE Square Rose**  
2<sup>1</sup>/<sub>2</sub> x 2<sup>1</sup>/<sub>2</sub>"  
Shown with Meridian lever  
(3100) in Satin Nickel



**RE Square Rose**  
2<sup>1</sup>/<sub>2</sub> x 2<sup>1</sup>/<sub>2</sub>"  
Shown with Apollo lever  
(450) in Satin Nickel



**AN Rose**  
2<sup>3</sup>/<sub>8</sub>" diameter  
Shown with Challenger lever  
(6000) in Polished Chrome



**AN Rose**  
2<sup>3</sup>/<sub>8</sub>" diameter  
Shown with Centaur lever  
(3490) in Polished Chrome



**DB4130**  
Shown in Satin Nickel



**DB4120**  
Shown in Satin Chrome

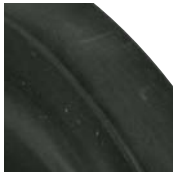
## Our Finishes

Ashley Norton

### Standard



.4 Satin Nickel



.8 Dark Oil Rubbed

Our numerous finishes allow our clients to express individuality. From trendy polished nickel to a more traditional satin nickel or oil rubbed bronze... the choice is yours.

Dark and light oil rubbed bronze are dynamic. These "living" surfaces will take on unique hues as age, climate and touch work their charm, creating an ever-changing patina.

Our standard finishes are dark oil rubbed (.8) and satin nickel (.4). Seven additional finishes are custom manufactured to order.

The photos shown in this brochure give a close representation of the true appearance of these finishes, but a visit to a local dealer will allow you to appreciate the true appearance and feel of our hardware.

### Custom



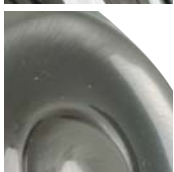
.2 Satin Chrome



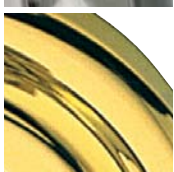
.9 Polished Chrome



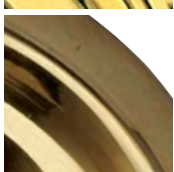
.4B Polished Nickel



.7 Pewter



.3 Polished Brass



.3U Unlacquered Brass



.6 Light Oil Rubbed

*Please note that products ordered in our custom finishes are manufactured to order.*

### GUIDE TO FINISH CODES

US	BHMA	ASHLEY	FINISH
26D	626	2	Satin Chrome
3	605	3	Polished Brass
3NL	605NL	3U	Unlacquered Brass
15	619	4	Satin Nickel
14	618	4B	Polished Nickel
~	~	6	Light Oil Rubbed
15A	620	7	Pewter
10B	613	8	Dark Oil Rubbed
26	625	9	Polished Chrome