



C1820 Flush Pull

Available 4x2"
6x2"
Shown in Satin Nickel



C1165 Edge Pull

3 7/8" x 3/4"
Shown in Dark Oil Rubbed



Patio Sliding Door Trim Set
SLDPULL Series

8 3/8" x 1"

Fixed 'D' handles with active turnpiece
Handing not required

Suitable for mortise locks with mounting holes
100mm (3.94") apart. Thumbturn located 31mm
above lower screw position (19mm offset from
center)

Available in keyed, patio and dummy functions

See www.ashleynorton.com/multipoint/ for
further details



Sliding Door Trim with American Cylinder

Fixed levers, active thumbturn

Available for Hoppe HLS 9000 lock and certain Ashland locks.

Available in keyed, patio and full dummy functions.

See www.ashleynorton.com/multipoint/ for further details



Sliding Door Trim with Profile Cylinder

Operating levers (8mm spindle) with profile cylinder
122mm center-to-center (lever to cylinder)

Available in keyed, patio and full dummy functions.

See www.ashleynorton.com/multipoint/ for further details

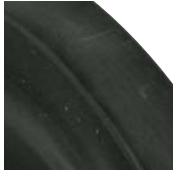
Our Finishes

Ashley Norton

Standard



.4 Satin Nickel



.8 Dark Oil Rubbed

Our numerous finishes allow our clients to express individuality. From trendy polished nickel to a more traditional satin nickel or oil rubbed bronze... the choice is yours.

Dark and light oil rubbed bronze are dynamic. These "living" surfaces will take on unique hues as age, climate and touch work their charm, creating an ever-changing patina.

Our standard finishes are dark oil rubbed (.8) and satin nickel (.4). Seven additional finishes are custom manufactured to order.

The photos shown in this brochure give a close representation of the true appearance of these finishes, but a visit to a local dealer will allow you to appreciate the true appearance and feel of our hardware.

Custom



.2 Satin Chrome



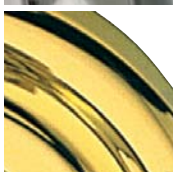
.9 Polished Chrome



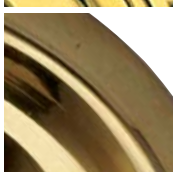
.4B Polished Nickel



.7 Pewter



.3 Polished Brass



.3U Unlacquered Brass



.6 Light Oil Rubbed

Please note that products ordered in our custom finishes are manufactured to order.

GUIDE TO FINISH CODES

US	BHMA	ASHLEY	FINISH
26D	626	2	Satin Chrome
3	605	3	Polished Brass
3NL	605NL	3U	Unlacquered Brass
15	619	4	Satin Nickel
14	618	4B	Polished Nickel
~	~	6	Light Oil Rubbed
15A	620	7	Pewter
10B	613	8	Dark Oil Rubbed
26	625	9	Polished Chrome